

Nature Blocks

Here's What You Get!

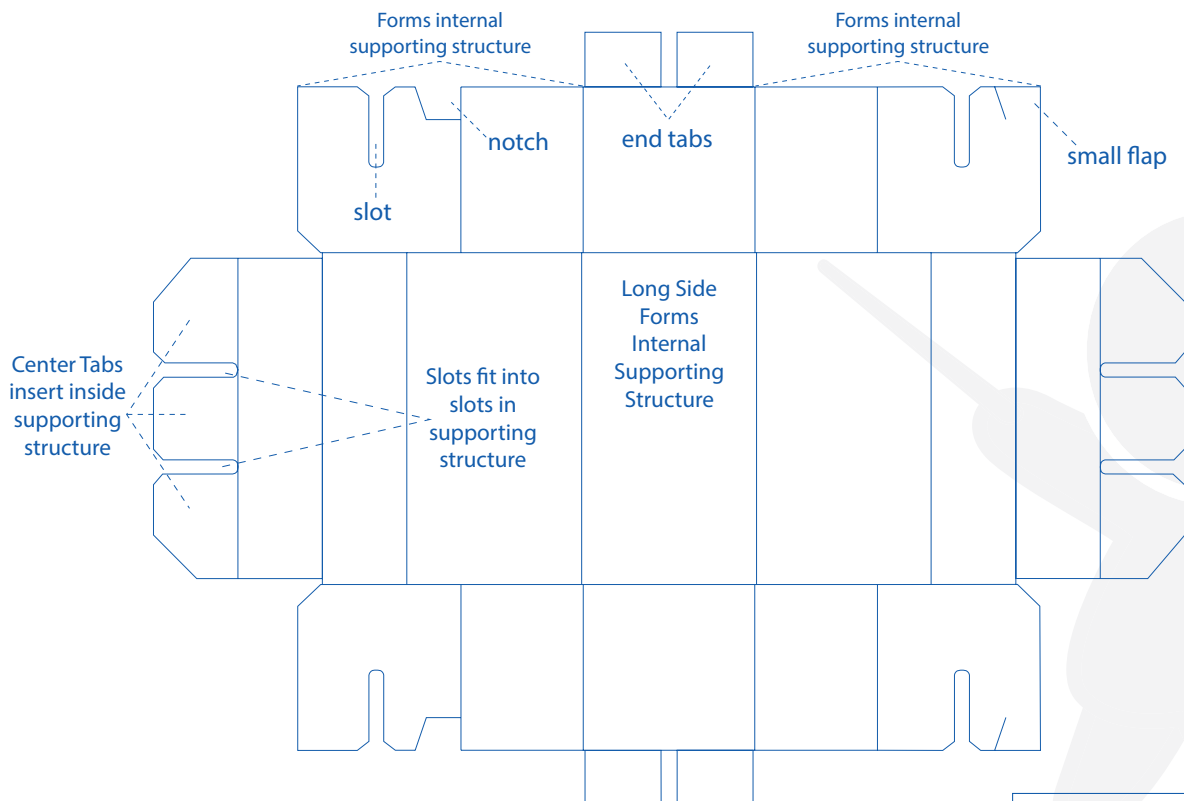
- 6 6" x 3" x 3" Pebble Blocks
- 6 6" x 3" x 3" Grass Blocks
- 6 6" x 6" x 3" Sky Blocks

Diagram of Block

Assembly time:
Approx. 15 minutes for the full set!

Assembly is easy! Follow these instructions to fold these 18 colorful, sturdy blocks that will invite and inspire imaginative play. These cardboard blocks are durable, yet light enough for children to carry several at one time for those big building projects.

Refer to the diagram and photos to see how the tabs and slots fold together in these simple assembly steps.



⚠ WARNING!
ADULT ASSEMBLY REQUIRED

Nature Blocks (continued)

1. Prepare the folds

Place one block printed side down and make a fold at every scored line. Then lay the block flat again.



2. Prepare the internal supporting structure

Fold a long side up and inward (2a) to create a cube.

Secure this cube by folding the small flap into the notch (2b).

Repeat on opposite side (2c).



Nature Blocks (continued)

3. Slide the Sides

Use a sliding and rolling motion to fold a side (3a) to the top of the supporting cubes.

Insert the center tabs into the slots in the supporting cubes (3b).

Repeat with other long side (3c and 3d).



Completed brick.



#NATRBLK