

# FACTORS & MULTIPLES

Find the factors of a number by seeing what numbers divide it evenly.

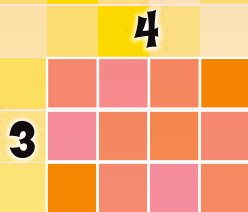
**WHAT ARE ALL THE FACTORS OF 12?**



$$12 \div 1 = 12$$



$$12 \div 2 = 6$$



$$12 \div 3 = 4$$

The **Factors** of 12 are:  
1, 2, 3, 4, 6 and 12

Find the multiples of a number by skip counting by that number.

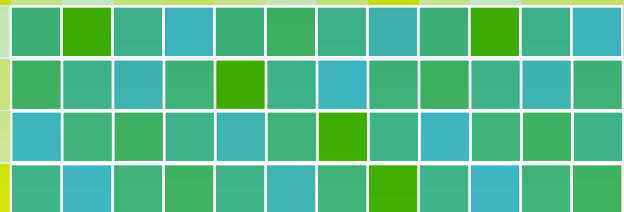
**WHAT ARE THE MULTIPLES OF 12?**



$$12 + 12 = 24$$



$$12 + 12 + 12 = 36$$



$$12 + 12 + 12 + 12 = 48$$

The **Multiples** of 12 include:  
12, 24, 36, 48...

**REMEMBER:**

A **FACTOR** is a number that is multiplied with another number to form a product.

**REMEMBER:**

A **MULTIPLE** is a number that can be divided evenly by a given number.