

Rocks

a combination of two or more minerals

Igneous

Rocks formed when hot magma or lava rises through cracks in the Earth's crust and cools



granite



pumice



obsidian

Look for:

- small crystals in the rock
- bubbly holes in the surface
- a smooth, glassy surface

Sedimentary

Rocks formed when layers of crushed rock and minerals are compressed under pressure



gypsum



breccia



sandstone

Look for:

- colored layers
- bits of rocks & minerals
- easily scratched surface

Metamorphic

Rocks formed when igneous or sedimentary rocks are exposed to great heat and pressure



gneiss



schist



slate

Look for:

- layers or bands of minerals
- fine texture with grain
- hard surface

and Minerals

one or more natural elements that form crystals



calcite



quartz



hematite



feldspar



copper



malachite



pyrite



amethyst



sulfur



dolomite



mica



agate



talc



alabaster



rose quartz



selenite

Identify minerals by:

luster

Look at the way light reflects off the surface of the sample.

streak

Pull the sample across a streak plate and look at the color.

texture

Feel the sample and decide if it is rough, smooth, bumpy, silky, flaky, or soapy.

hardness

Try to scratch the sample with the 10 minerals on the Mohs scale.

color

Look at the color or colors and compare the sample to known minerals.

Rocks

a combination of two or more minerals

Igneous

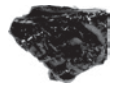
Rocks formed when hot magma or lava rises through cracks in the Earth's crust and cools



granite



pumice



obsidian

Look for:

- small crystals in the rock
- bubbly holes in the surface
- a smooth, glassy surface

Sedimentary

Rocks formed when layers of crushed rock and minerals are compressed under pressure



gypsum



breccia



sandstone

Look for:

- colored layers
- bits of rocks & minerals
- easily scratched surface

Metamorphic

Rocks formed when igneous or sedimentary rocks are exposed to great heat and pressure



gneiss



schist



slate

Look for:

- layers or bands of minerals
- fine texture with grain
- hard surface

and Minerals

one or more natural elements that form crystals



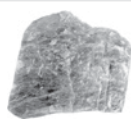
calcite



quartz



hematite



feldspar



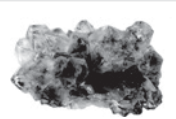
copper



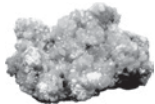
malachite



pyrite



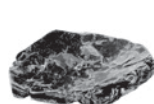
amethyst



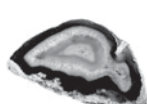
sulfur



dolomite



mica



agate



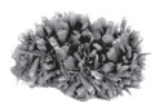
talc



alabaster



rose quartz



selenite

Identify minerals by:

luster

Look at the way light reflects off the surface of the sample.

streak

Pull the sample across a streak plate and look at the color.

texture

Feel the sample and decide if it is rough, smooth, bumpy, silky, flaky, or soapy.

hardness

Try to scratch the sample with the 10 minerals on the Mohs scale.

color

Look at the color or colors and compare the sample to known minerals.